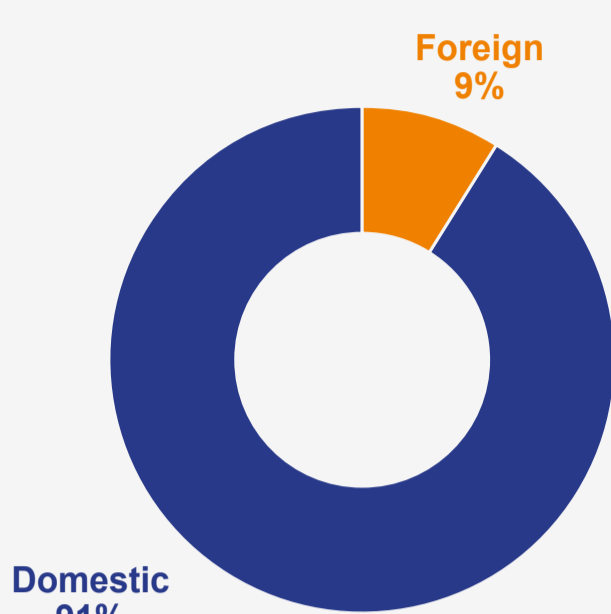
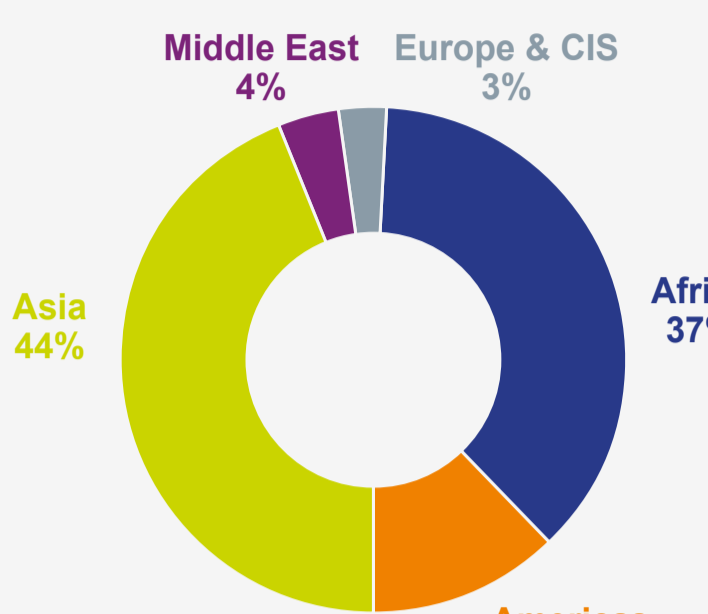


Kidnap Statistics

Kidnap victim nationality, 2016*



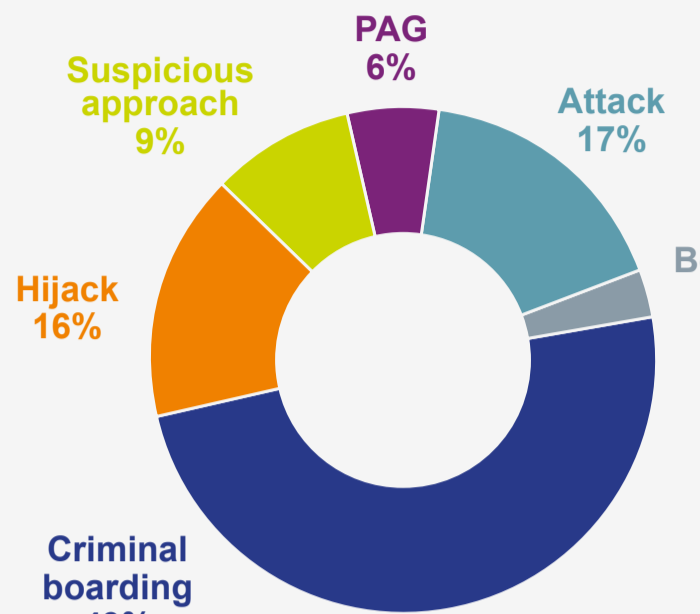
Kidnap incidents by region, 2016*



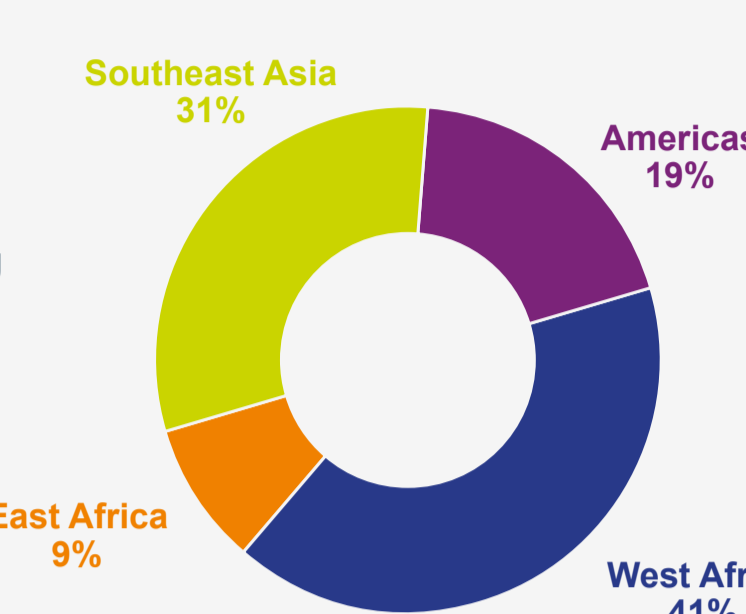
*This data is drawn from open source material, including news articles. Given the selectivity and incomplete or inaccurate nature of some reporting, the data is not exhaustive. Any conclusions should take these limitations into account.

Piracy Statistics

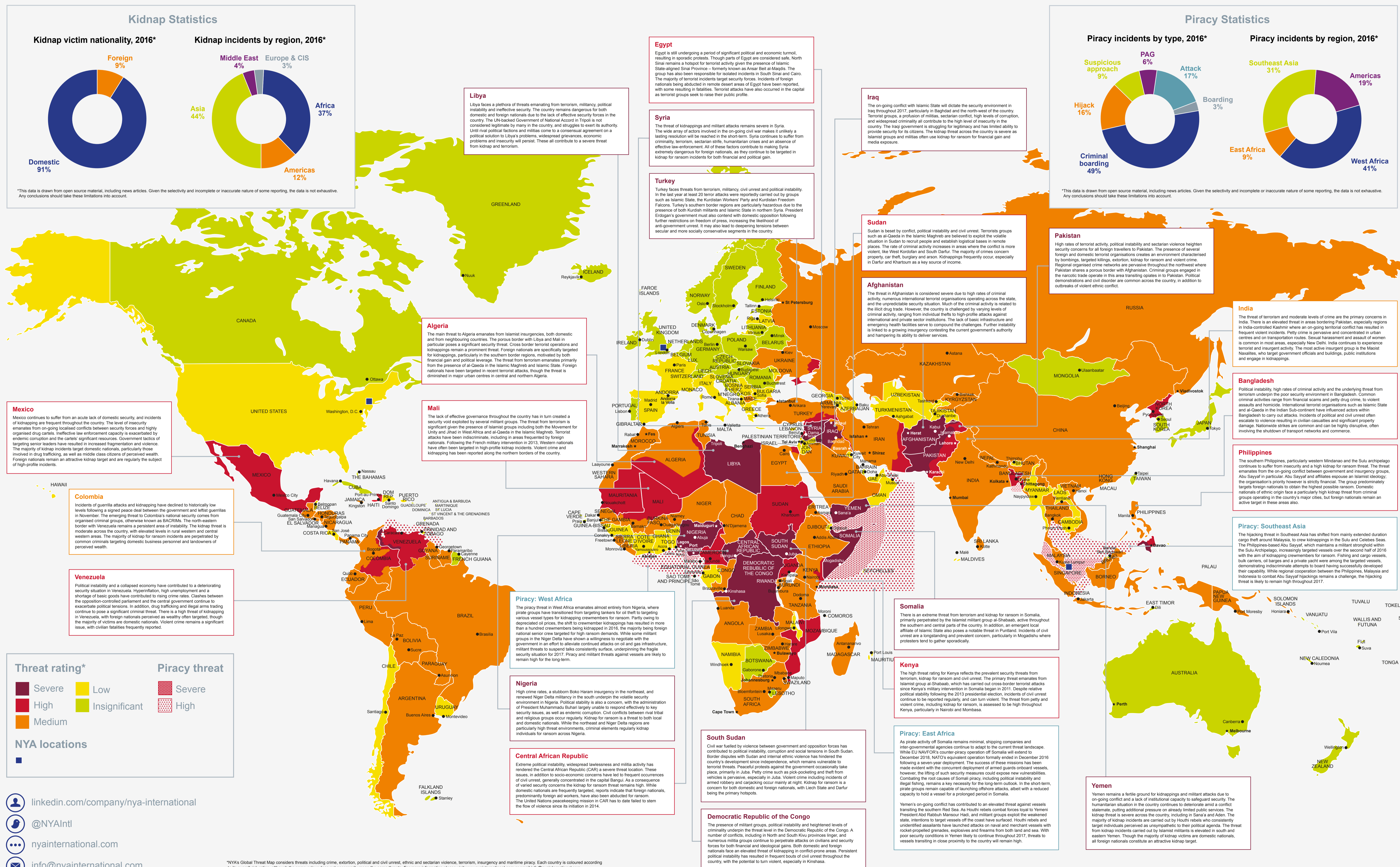
Piracy incidents by type, 2016*



Piracy incidents by region, 2016*



*This data is drawn from open source material, including news articles. Given the selectivity and incomplete or inaccurate nature of some reporting, the data is not exhaustive. Any conclusions should take these limitations into account.



Threat rating*

- Severe (Dark Red)
- High (Red)
- Medium (Orange)
- Low (Yellow)
- Insignificant (Light Green)

Piracy threat

- Severe (Dark Red)
- High (Red)

NYA locations

- NYA (Blue square)

[linkedin.com/company/nya-international](https://www.linkedin.com/company/nya-international)
[@NYAIntl](https://www.facebook.com/nyaintl)
[nyainternational.com](https://www.nyainternational.com)
info@nyainternational.com

*NYA's Global Threat Map considers threats including crime, extortion, political and civil unrest, ethnic and sectarian violence, terrorism, insurgency and maritime piracy. Each country is coloured according to its overall risk rating, although the same colour does not necessarily mean the same threats. For more information please visit www.nyainternational.com or email info@nyainternational.com